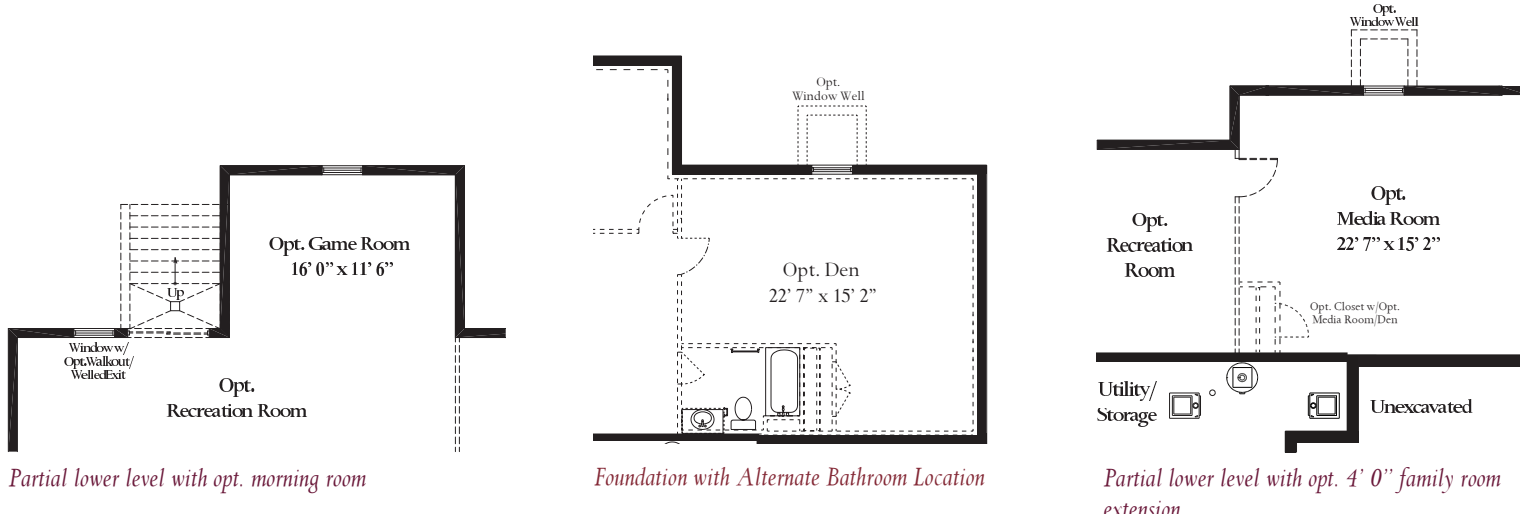
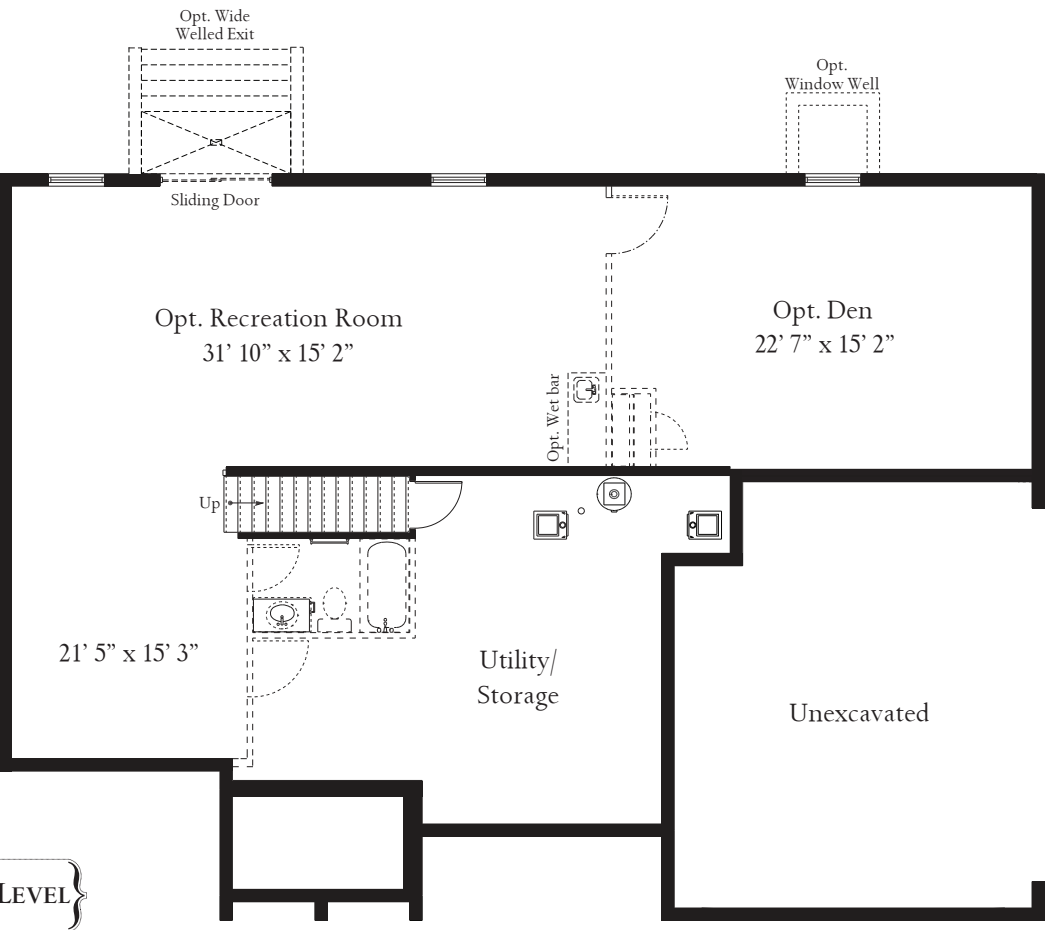


The Chelsey



{Cottage}



{LOWER LEVEL}



{Eastern Seaboard}



{Eastern Seaboard with Portico}



{Farmhouse}



{Craftsman}

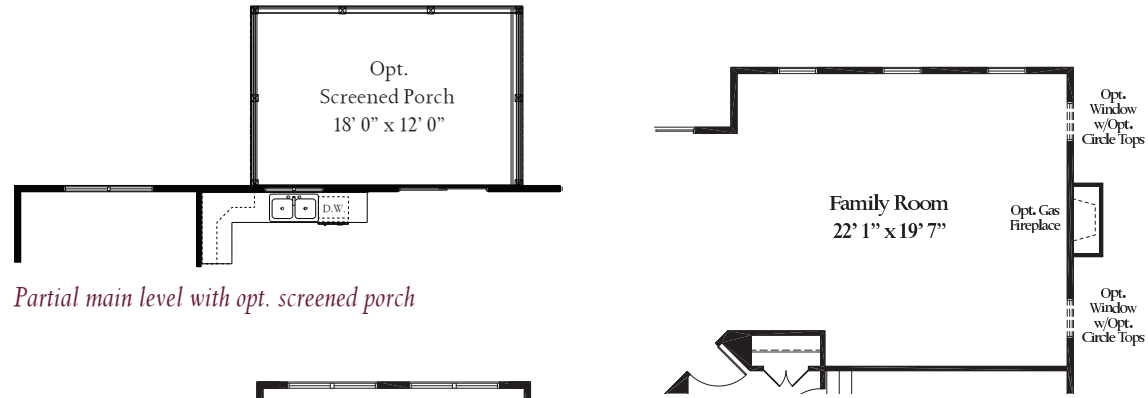
You will find charm everywhere you look in The Chelsey, beginning with a sunlit 2-story foyer that introduces the main level of the home. A private library sets itself apart, while the living room flows directly into the elegant dining room. At the back of the home, the well-appointed kitchen and breakfast nook open to a spacious family room. Upstairs, the palatial owners suite features dual walk-in closets and light-filled garden bath with separate shower, soaking tub, and dual vanities. Elevation Drawings show Optional Features.

ATLANTIC BUILDERS
EXPERIENCE THE DIFFERENCE



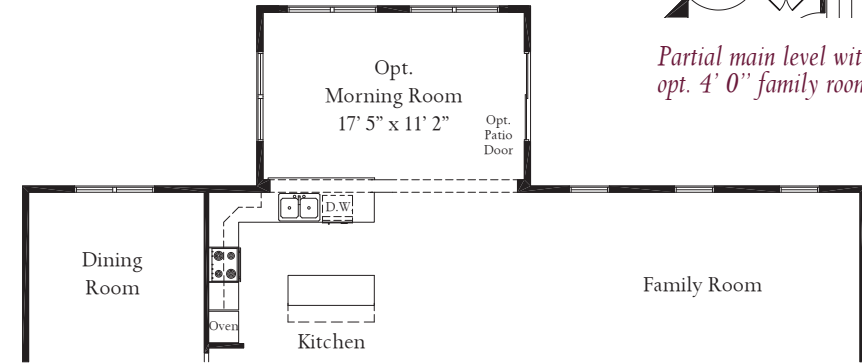
ATLANTIC BUILDERS
EXPERIENCE THE DIFFERENCE

The Chelsey

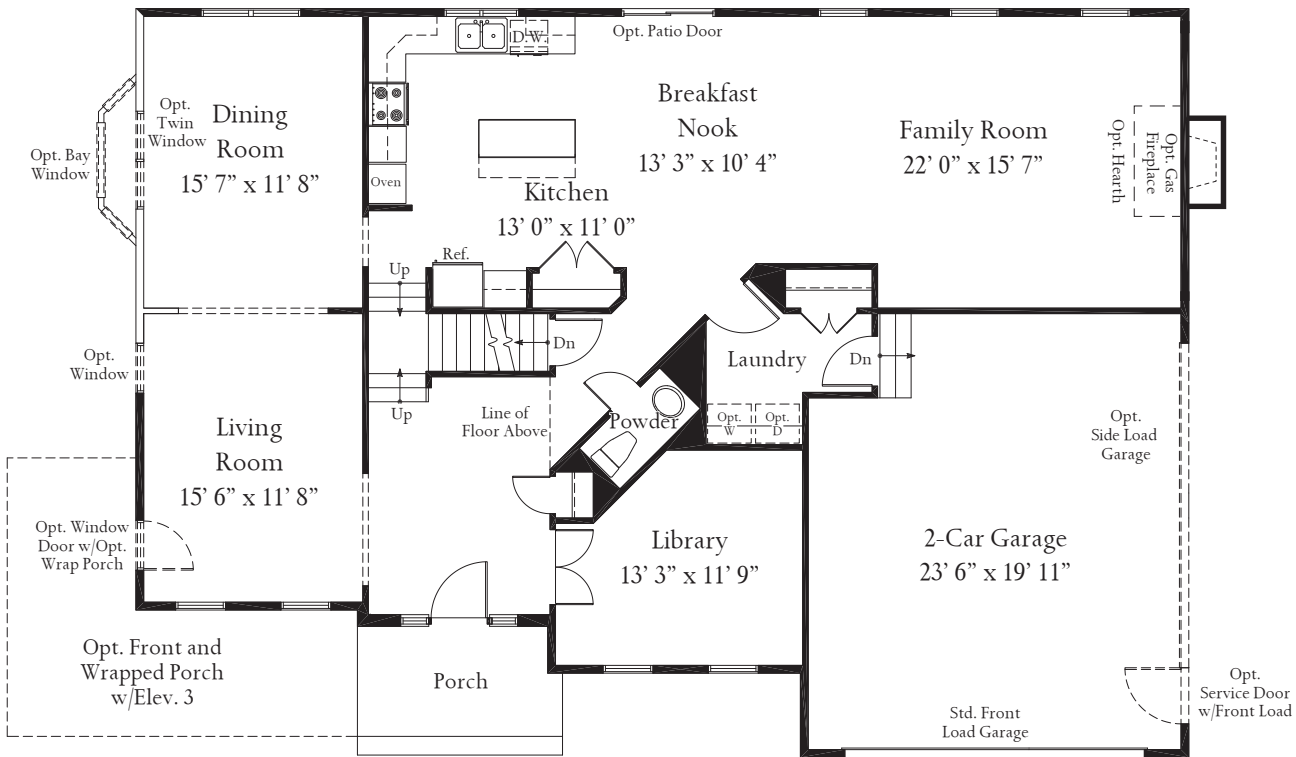


Partial main level with opt. screened porch

Partial main level with opt. 4' 0" family room extension



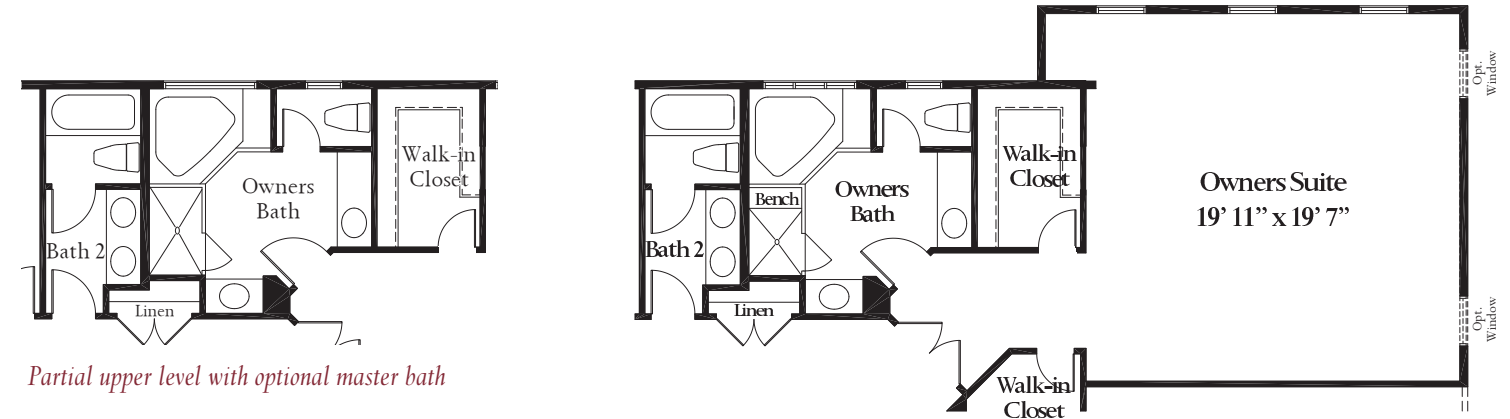
Partial main level with opt. morning room



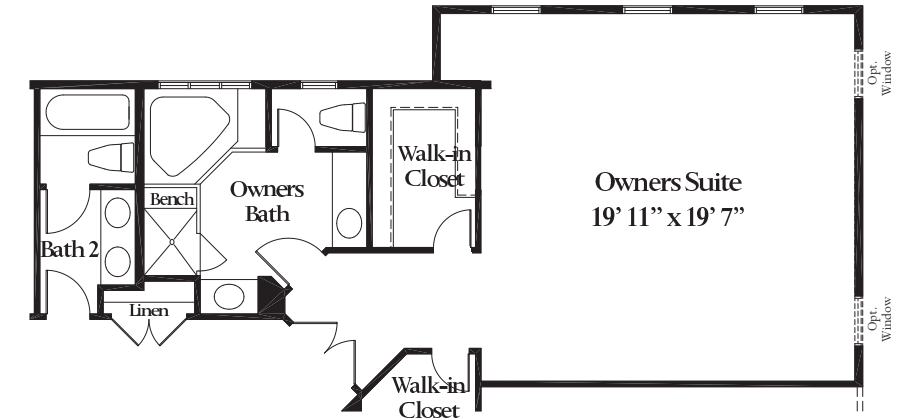
MAIN LEVEL



Partial main level with Front Load Garage w/ Opt. Personnel Door

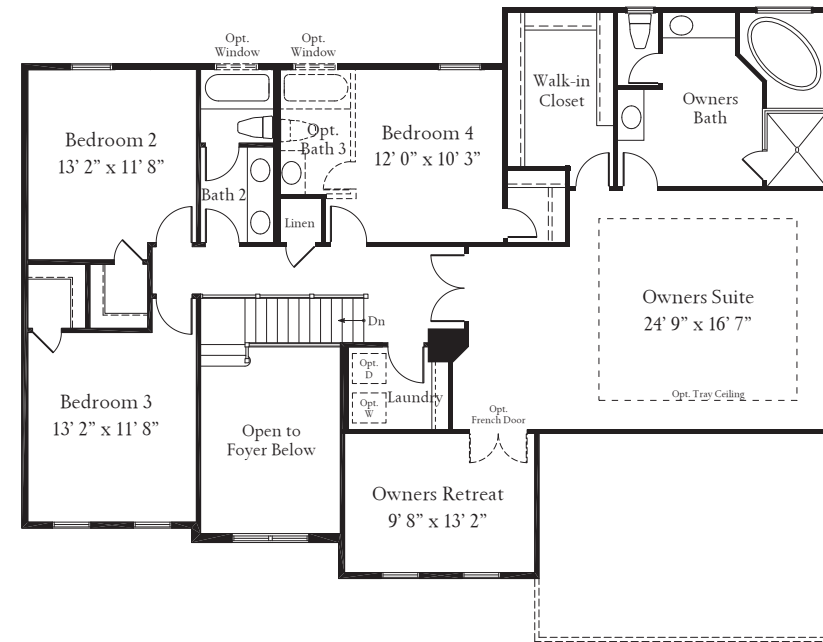
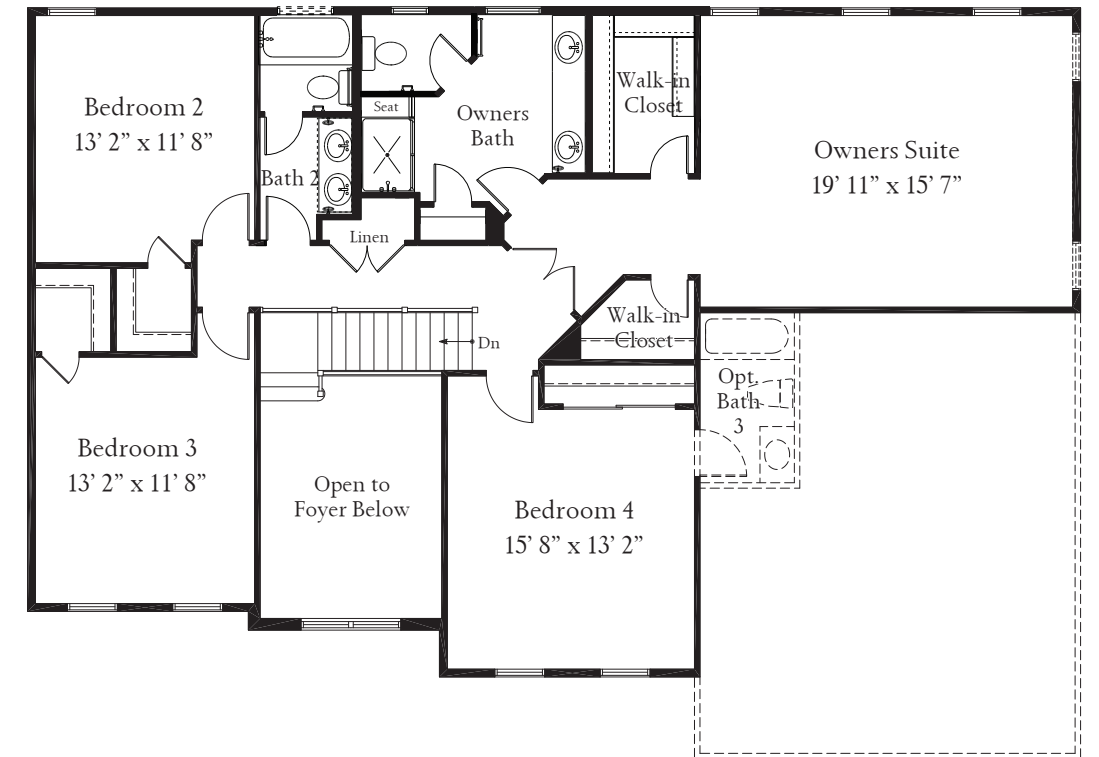


Partial upper level with optional master bath



Partial upper level with opt. 4' 0" family room extension

UPPER LEVEL



Alternate Second Floor Plan

If the 3-car front-load garage is selected, one window moves to create a double window

These renderings and floorplans are conceptual only. Actual details may vary. This insert is for illustrative purposes only. Atlantic Builders' continuing research and development program means specifications and plans are subject to change without notice. Standard features vary per community. Please consult Community Sales Manager for details.